

PART OF NE 1/4, SEC. 32 & NW 1/4, SEC 33, T.7N., R.2W., S.L.B. & M.

PLAIN CITY BLOCK 7, PLAT A

TAXING UNIT: 296

SCALE 1" = 50'

SEE PAGE 36

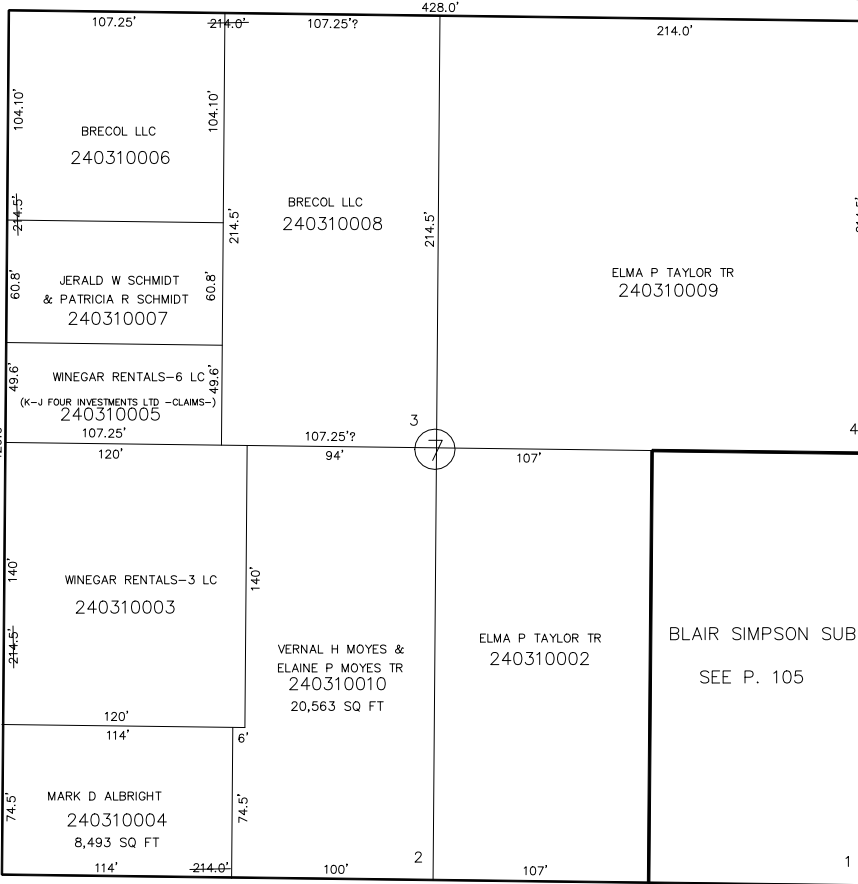
12

2425 NORTH STREET

S 89°17' E

WEST STREET

WEST STREET



SEE PAGE 32

8

SEE PLAT B
PAGE 51

6

SEE PAGE 30

SEE ORIGINAL DEDICATION
PLAT OF PLAIN CITY IN
BOOK 5, PAGE 80 OF RECORDS.